



**SK 800**

## Process Monitoring Terminal with 15" color touch screen

The **SK 800** process monitoring terminal combines the latest PC-technology with high-performance signal processors for analyzing the measured machine data. The large 15" color touch screen makes this model particularly well suited for demanding graphical applications, and offers a very simple and intuitive mode of operation. Our new unique **Mandon** system "talks" to the operator and assists in rapid troubleshooting and better job performance.

The **SK 800** is prepared to work with our hybrid sensors (patent applied for) and to act as machine data terminal in conjunction with the **SK-go!**® factory data networking System.

# Performance SK 800

## Monitoring Functions

- envelope monitoring of forming force signals (up to 16 channels)
- prepared for Hybrid-sensors
- **SKROLLmaster** die-match control for thread rollers
- **SKHybridmaster** tool alignment set-up assistance for cold forming presses
- auto start feature after machine stop
- absolute force/machine loading profile
- Q-factor and Trending stop/go chart
- **SKMachinemaster** error storage
- **SKPartlmaster** part data storage
- **SKProzzymaster** auto envelopes
- **SKPuzzlemaster** expert monitoring programs for special types of errors and forming operations
- **NEW: Mandon System**

## Technical Features

- newly designed operating surface
- 15" TFT color touch-screen
- PC with Windows XP-Embedded and compact flash memory
- EMR-proof, ergonomically designed flat enclosure,
- numerous mounting options (yoke, swivel, floor pedestal, panel mount)
- part counters for job size, tool life, unattended production and SPC
- sorting and batching logics
- machine terminal function

## Technical Data

- powerful digital signal analysis processor with up to 16 sensor inputs
- 5 digital outputs (including 3 or 4 relay outputs)
- 5 digital inputs
- optional I/O-expansion module
- connection for crank angle decoder
- data ports: serial RS-232, Ethernet, 2 x USB, Teleservice
- high output digital signal amplifiers

Dimensions (without yoke):  
385 W x 325 H x 135 D (mm)  
Supply: 24 VDC, 60W  
Weight: 12 kg



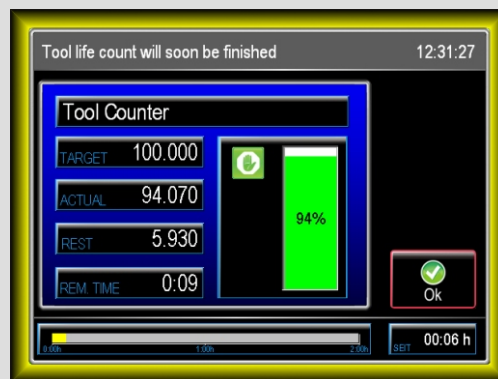
Please note that some features are optional features even if not specifically mentioned. Modifications are without prior notice.

## Examples for display screens and functional features:



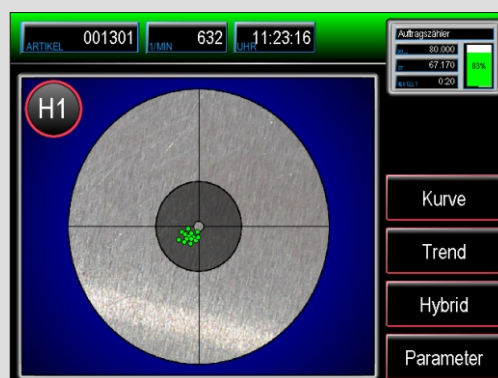
Dynamic envelope monitoring is applied to all channels. Up to 16 channels can be monitored.

**SKProzzymaster** automatically calculates the right size envelope to perfectly match each running process. **SKPuzzlemaster** is provided for quick activation of expert monitoring routines.

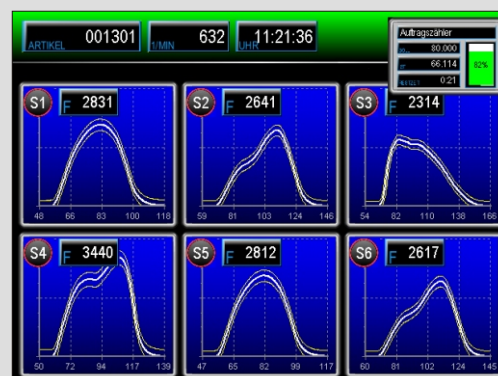


Our unique **Mandon**-system "talks" to the machine operator.

**Mandon** is constantly thinking along with the process, gives timely warnings, provides intelligent remedies, and gives precise recommendations on how to improve productivity and quality. And all of that happens automatically without any operator intervention.



The new **Hybridmaster** set-up assistant for presses shows on a target screen if punch and die side tools are properly aligned when used in conjunction with our hybrid sensors (patent applied for).



Compose your own individual **viewing cockpit** with our multi-screen layout showing up to 6 different info screens simultaneously.

Just select those screens you require often for your application, and put them all upfront. This saves you the hassle of switching screens around all the time.