



SK 500

Process Monitoring Terminal with 10,4" color touch screen

The **SK 500** process monitoring terminal combines the latest PC-technology with high-performance signal processors for analyzing the measured machine data. The easy-to-understand graphics and the large 10,4" color touch screen offer very simple and intuitive operation.

The features include envelope monitoring for up to 8 sensors, the **SKPuzzlemaster** expert system, trending with stop/go graph, part data memory and machine diagnosis. For thread rollers, the **SKROLLmaster** die match indicator is available. Full networking and factory data collection capabilities are also provided.

Performance SK 500

Monitoring Functions

- envelope monitoring of forming force signals (up to 8 channels)
- prepared for Hybrid-sensors
- **SKROLLmaster** die-match control for thread rollers
- auto start feature after machine stop
- absolute force/machine loading profile
- Q-factor and Trending stop/go chart
- **SKMachinemaster** error storage
- **SKPartmaster** part data storage
- **SKProzzymaster** auto envelopes
- **SKPuzzlemaster** expert monitoring programs for special types of errors and forming operations

Technical Features

- newly designed operating surface
- 10,4" TFT color touch-screen
- PC with Windows XP-Embedded and compact flash memory
- EMR-proof, ergonomically designed flat enclosure,
- numerous mounting options (yoke, swivel, floor pedestal, panel mount)
- part counters for job size, tool life, unattended production and SPC
- sorting and batching logics
- machine terminal function

Technical Data

- powerful digital signal analysis processor with up to 8 sensor inputs
- 5 digital outputs (including 3 or 4 relay outputs)
- 5 digital inputs
- optional I/O-expansion module
- connection for crank angle decoder
- data ports: serial RS-232, Ethernet, 2 x USB, Teleservice
- high output digital signal amplifiers

Dimensions (without yoke):
290 W x 240 H x 115 D (mm)
Supply: 24 VDC, 60W
Weight: 8 kg



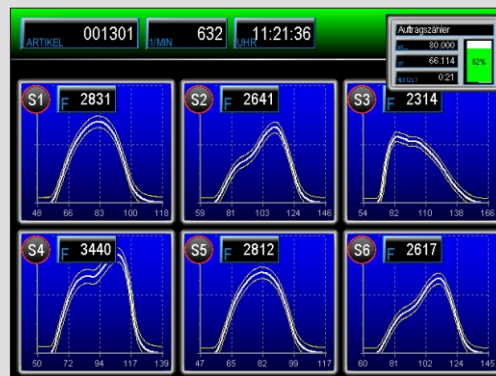
Please note that some features are optional features even if not specifically mentioned. Modifications are without prior notice.

Examples for display screens and functional features:



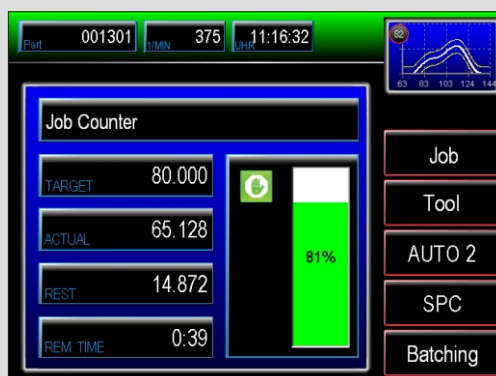
Dynamic envelope monitoring is applied to all channels. Up to 16 channels can be monitored.

SKProzzymaster calculates fully automatically the right size envelope to match perfectly each running process. **SKPuzzlemaster** is provided for quick activation of expert monitoring routines.



Compose your own individual **viewing cockpit** with our multi-screen layout showing up to 6 different info screens simultaneously.

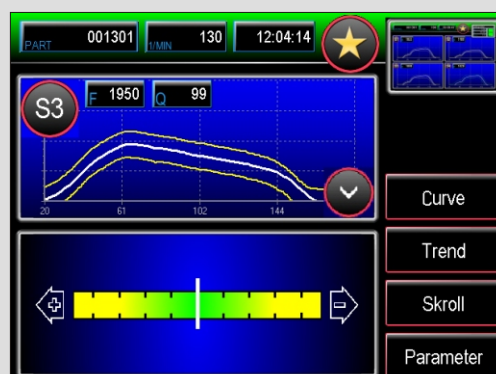
Just select those screens you require often for your application, and put them all upfront. This saves you the hassle of switching screens around all the time.



Easy-to-set part counters are available for controlling

- order size,
- tool life,
- unattended production runs
- batching unit
- SPC inspection intervals

All counters show preset quantity, current count, remaining parts, remaining run time and degree of completion.



The **SKROLLmaster®** die match indicator assists operators in aligning thread roll dies quicker, more precisely, and more efficiently.

SKROLLmaster® improves thread quality and extends die life.