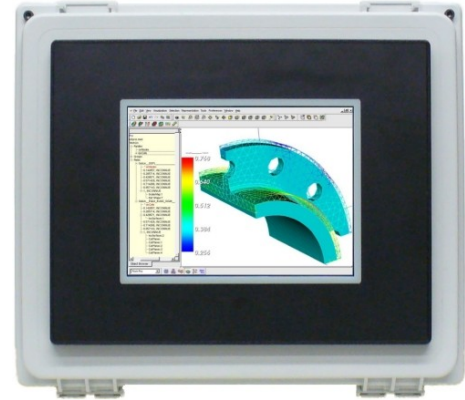




CAD Drawings on the shop floor with *IMPAX TSS*

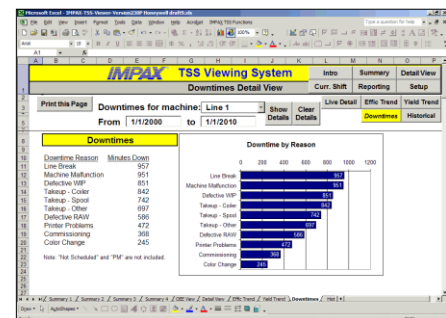
The IMPAX Time Saver System, an efficiency monitoring system by Process Technologies Group, Inc., has been expanded with new technology and new capabilities. The TSS's touch-screen interface is now available in an 8" size (and larger sizes are available on request). The new larger screens allow for better display of shop floor information, as well as the ability to display PDF and CAD documents.



IMPAX TSS monitoring units are designed to track downtime and production for production machinery as well as all other factory processes. The monitors feature touch-screen interfaces that are now available in 4", 6", and 8" sizes. These screens display real-time production totals, machine efficiency, and accumulated machine uptime and downtime. The new 8" screen provides twice the previous resolution, so more information can be shown on each screen, resulting in a better overview of machine status at a glance.

The new 8" screen brings the ability to view PDF files and other documents to the TSS. CAD drawings, setup instructions, part schematics, and other documents can be viewed by machine operators right at the machine. Documents distributed this way are easy to open, free to distribute, are accessible at any TSS unit, and they cannot be lost or damaged.

The TSS's data collection is further enhanced by the companion software system, TSS-NET. This PC software collects all historical data on the machine process, logs it to files, and allows custom reporting. Reports can be viewed on job history, production numbers, operator performance, and more.



Additional information can be found at PTG's Time Saver System website. The site, impaxtss.com, provides basic information as well as downloads, articles, and application notes on IMPAX TSS monitors and software.

Company Profile:

Process Technologies Group, Inc. designs and manufactures process monitors, efficiency monitors, and data collection software. The IMPAX TimeSaver System is PTG's customizable machine efficiency and downtime tracking system.

For more information:

Jerry McCabe, 630-393-4777, contactus@impaxtss.com