

NEW: Perfect Envelope Adjustment with **SKProzzymaster**

The new **SKProzzymaster**-Software ensures that the envelope width is always set so that the current process is perfectly monitored.

An automatic routine guarantees a uniform and consistently high monitoring accuracy without the need for any additional operator intervention:

- for every product
- on every machine
- with every operator

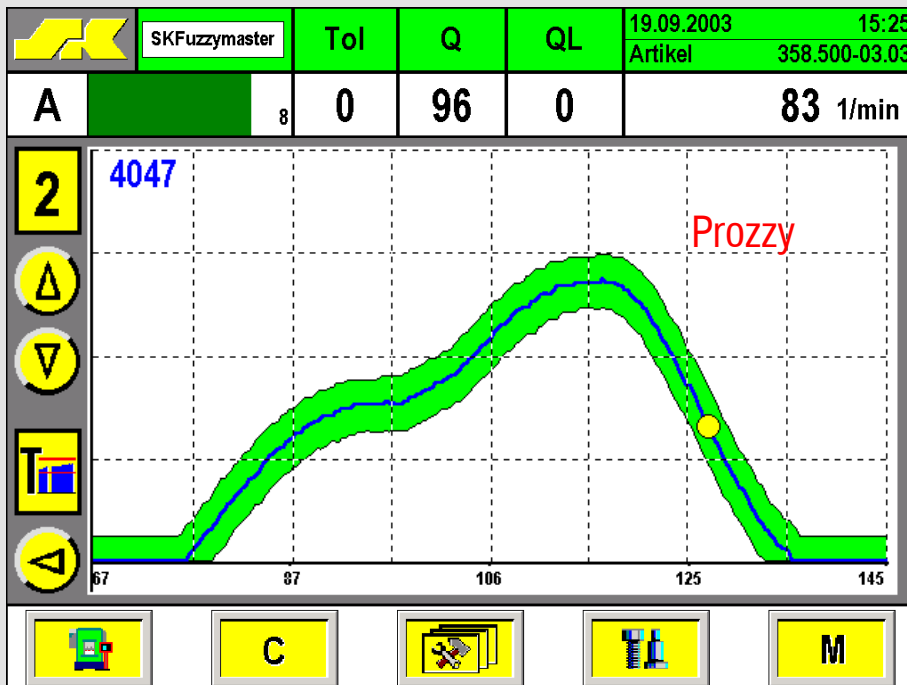
Monitoring without SKProzzymaster

The sensitivity of a monitoring system is typically not matched correctly to the conditions of the current process. Very often, the envelope limits are set to a low sensitivity that can detect only the more severe failures.

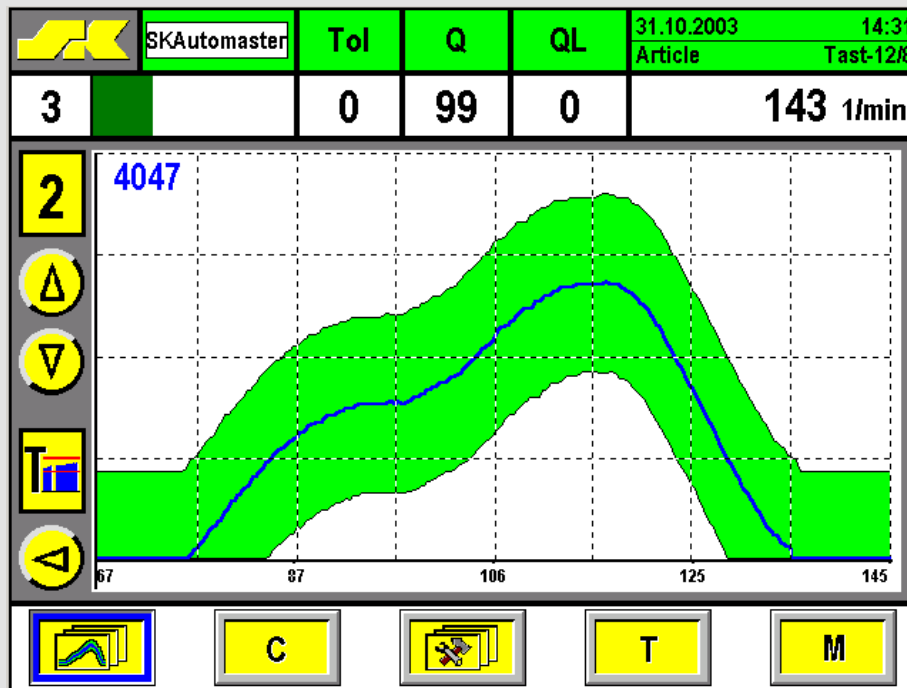
Since the envelope limit settings are set too wide, the envelope is not narrow enough to detect certain critical process problems shown in the force curve.

This condition typically is present after setting up a new job, because the operators forget to adjust the envelope to maximize the sensitivity.

IMPAX/SK Technologies
 1405 Bernard, Unit B-2
 Addison, Illinois 60101
 Tel (630) 916-7777
 Fax (630) 916-7832
 Toll Free (800) 272-4784
 E-mail: impaxptg@aol.com
 Web: www.impaxptg.com



This is how **SKProzzymaster** will set the envelopes all by itself: an optimum setting matches the current process variation with maximum sensitivity while preventing unnecessary machine stoppages.



A typical situation: although the machine is running with very stable and constant force curves, the envelope is set to a very low sensitivity. This means you are wasting monitoring accuracy for no apparent reason.